

Access in Appalachia



Client

Appalachian Regional Commission (ARC)

Facts

Period2020

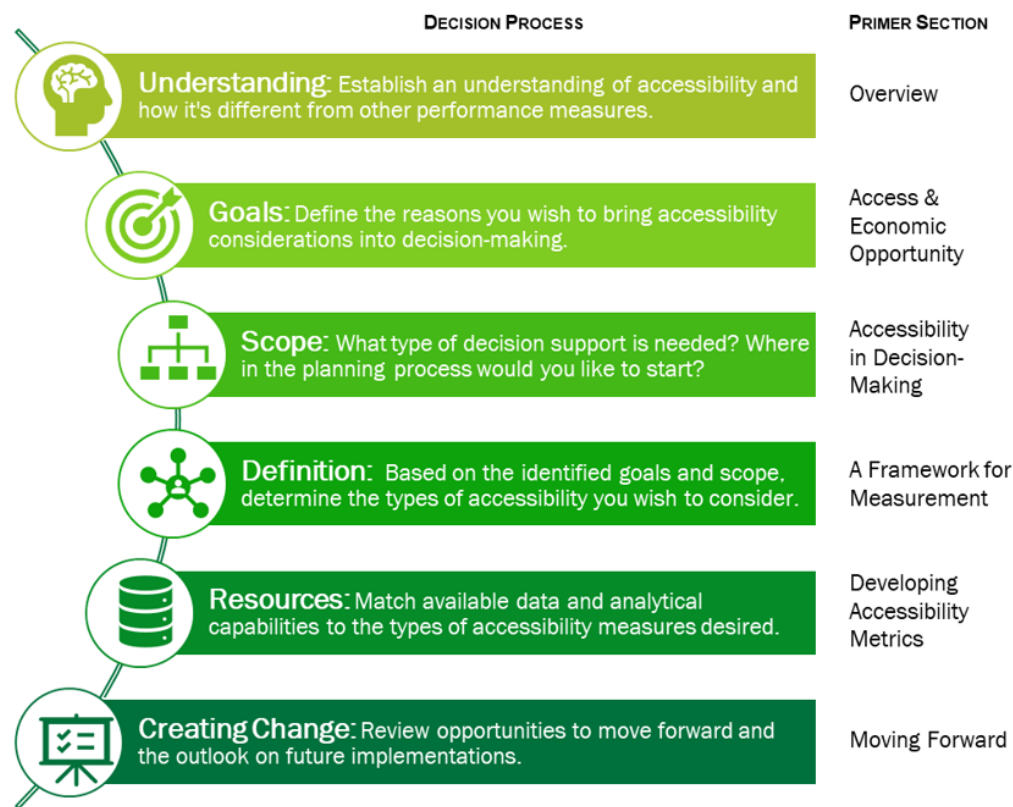
Project CountryUnited States

EBP supported the Appalachian Regional Commission (ARC) in defining approaches to accessibility measurement that are relevant to Appalachian needs and concerns.

Accessibility refers to the ability of people to reach desired destinations and activities (or conversely, the ability of business activities to reach workers and customers). Historically, many Appalachian communities have been physically isolated, leading to and compounding a lack of access to jobs, health care, education, and more. The Appalachian Regional Commission was created, in part, to address the region’s physical isolation and resulting socioeconomic setbacks. This study takes a fresh look at transportation challenges through the lens of accessibility, incorporating a multimodal perspective as well as consideration of new data sources.

The study outlines measurement approach

SIX STEPS TO BUILD ACCESSIBILITY CONSIDERATIONS INTO DECISION-MAKING



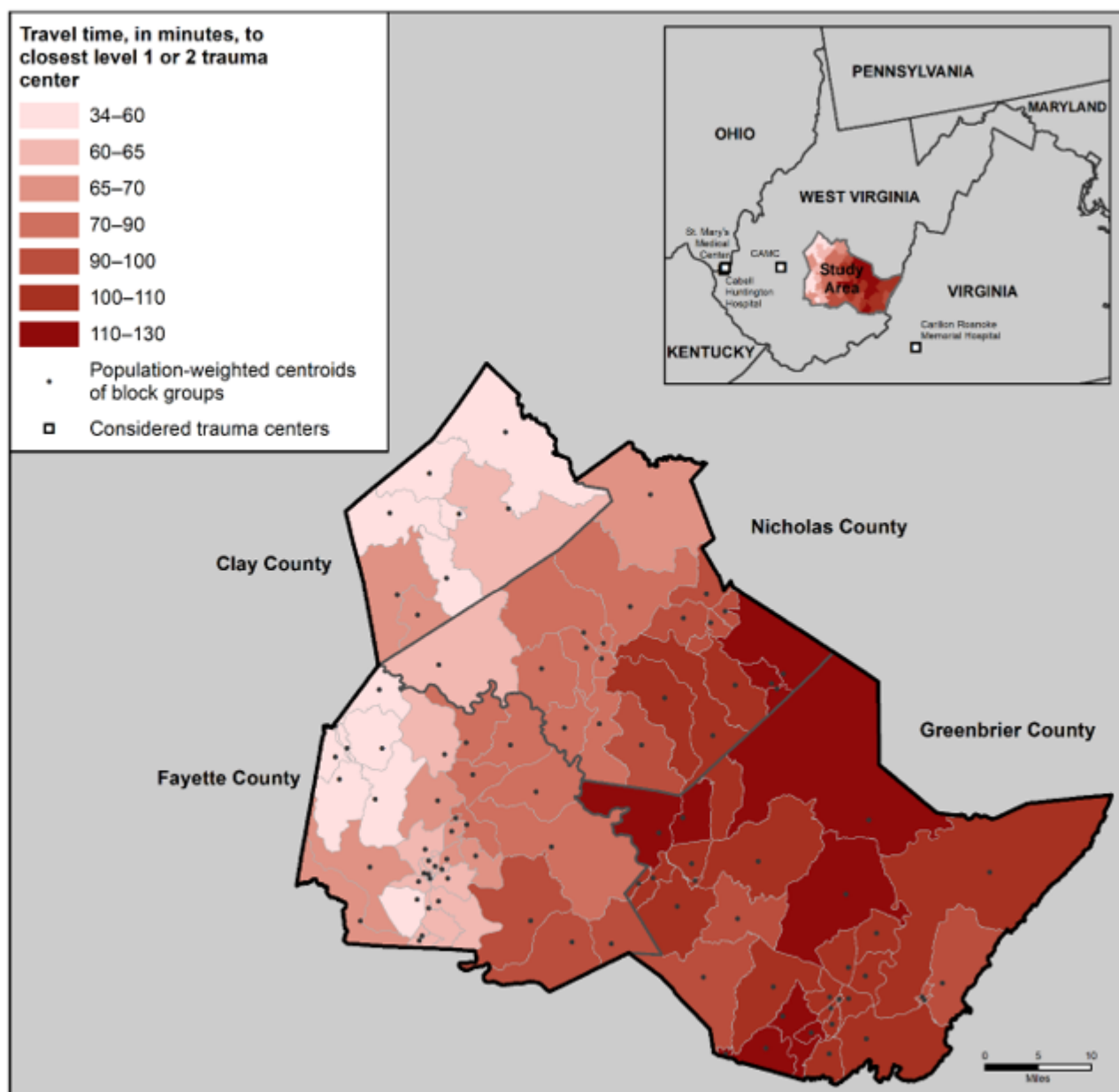
hes that capture key dimensions of access for people and businesses and presents a vision for applying those measures across the entire Appalachian Region.

To help advance the goal of more fully integrating access into transportation decision-making, this full research report is accompanied by a more concise companion primer offering guidance on incorporating access concepts into decision-making. The primer is designed to offer an entry point for analysts and decision-makers interested in learning about access issues and measurement, without providing the full methodological detail,

COMPOSITION OF A MULTIMODAL METRIC



TRAVEL TIME TO THE CLOSEST LEVEL 1 AND 2 TRAUMA CENTER (SAMPLE MAP)



Source: EBP analysis using data from the census, extracted using IPUMS NHGIS, the American Trauma Society, and ArcGIS Online.

Contact Persons



Naomi Stein
naomi.stein@ebp-us.com